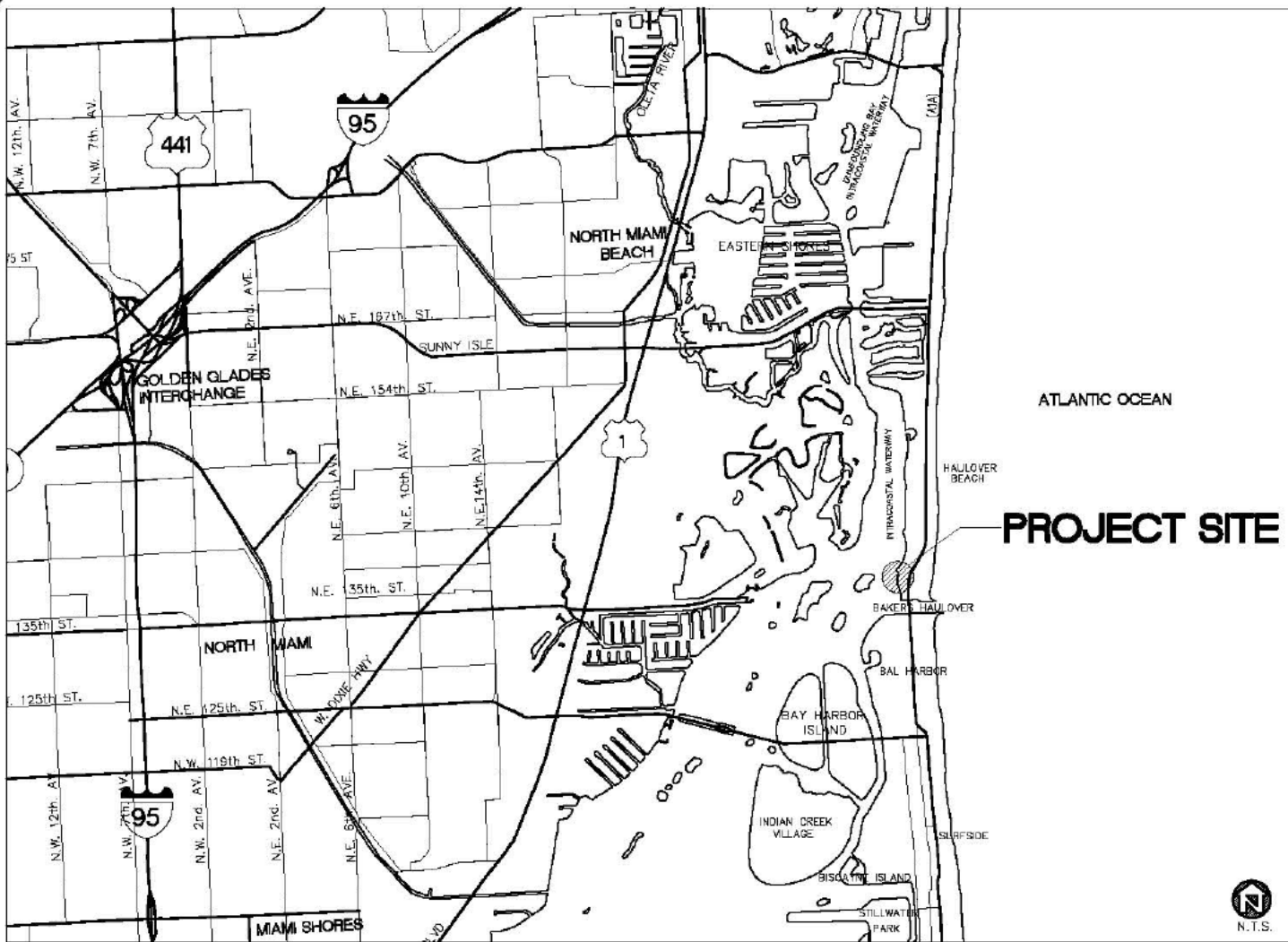


REV. DATE	DESCRIPTION
12/13/16	ADDED SHEET 7



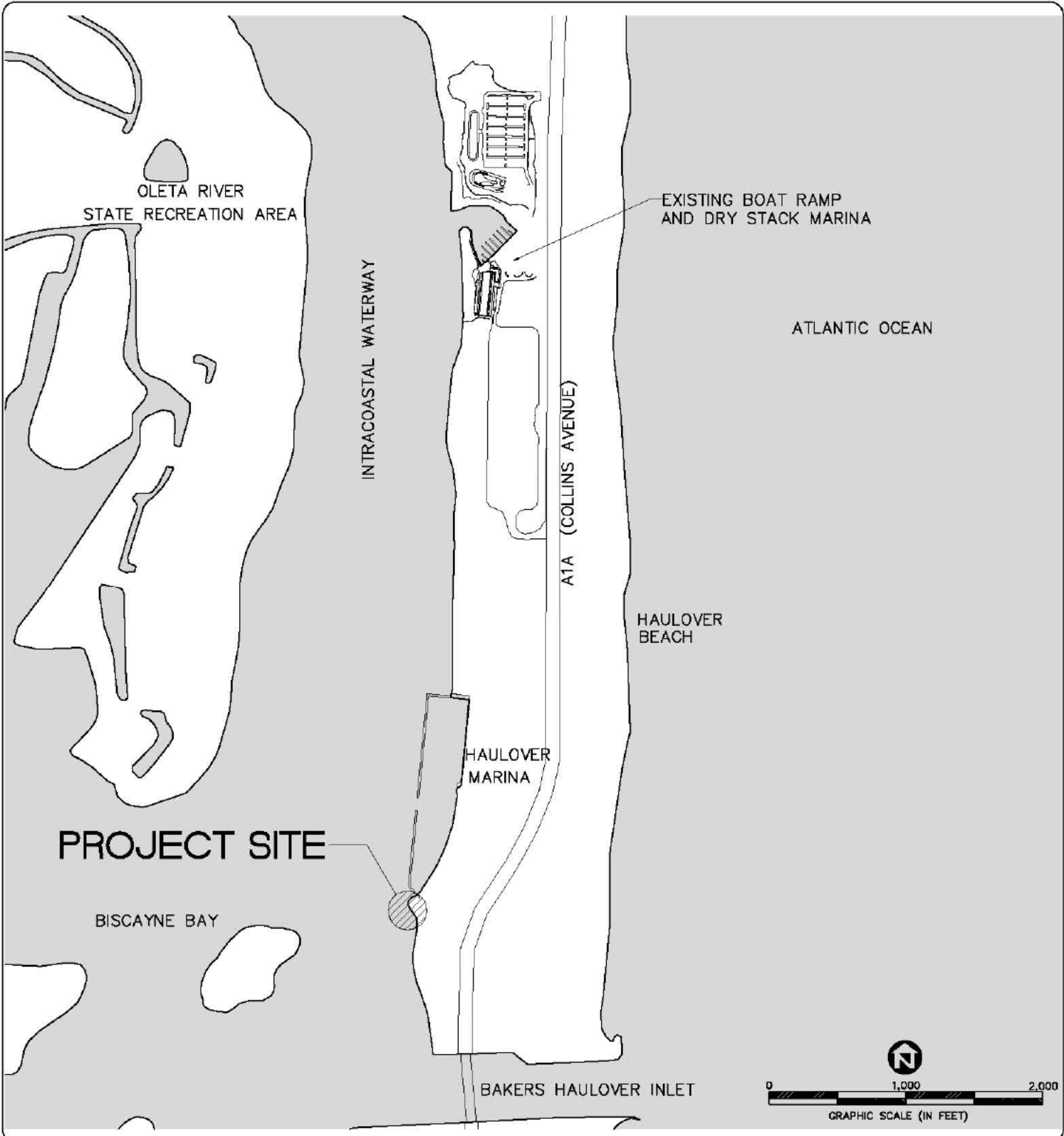
INDEX OF DRAWINGS

SHEET #	TITLE
1	VICINITY MAP + INDEX OF DRAWINGS
2	LOCATION MAP
3	EXISTING CONDITIONS
4	SITE PLAN
5	SECTION A-A AND B-B
6	SECTION C-C
7	SLIP LAYOUT

PURPOSE: VICINITY MAP + INDEX OF DRAWINGS
 DATUM: N/A
 JOB #: 2010-03
EAS ENGINEERING, INC.
 55 ALMERIA AVENUE CORAL GABLES 33134 (305)445-5553

COUNTY OF MIAMI-DADE STATE OF FLORIDA
 APPLICATION BY:
MIAMI-DADE PARK AND RECREATION DEPT.
 HAULOVER MARINA SECTION: 23
 13700 COLLINS AVENUE TOWNSHIP: 52S
 SHEET 1 DATE: 08/30/16 RANGE: 42E

REV.	DATE	DESCRIPTION

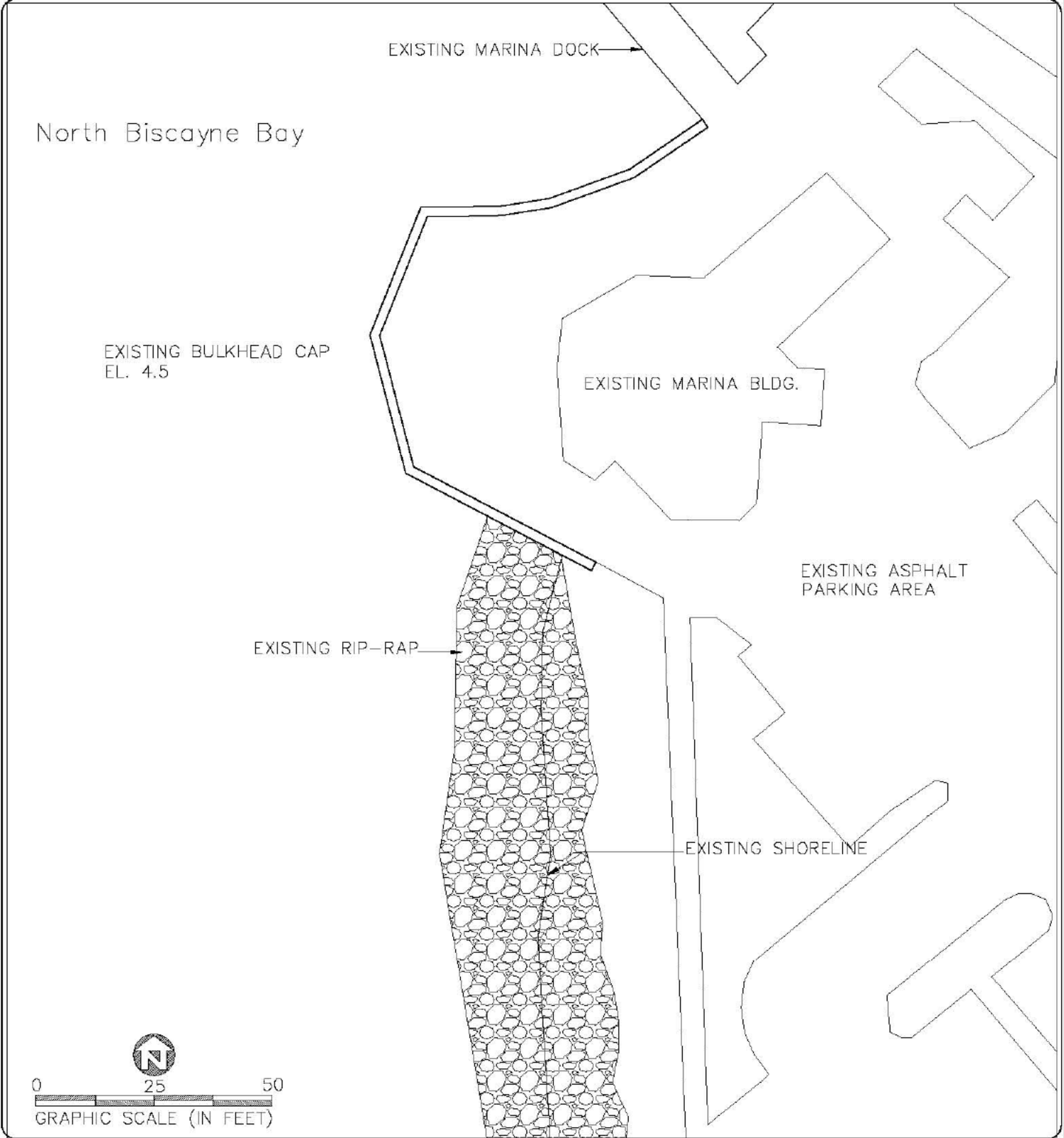


PURPOSE: **LOCATION MAP**
 DATUM: N/A
 JOB #: 2010-03

EAS ENGINEERING, INC.
 55 ALMERIA AVENUE CORAL GABLES 33134 (305)445-5553

COUNTY OF MIAMI-DADE STATE OF FLORIDA
 APPLICATION BY:
MIAMI-DADE PARK AND RECREATION DEPT.
 HAULOVER MARINA SECTION: 23
 13700 COLLINS AVENUE TOWNSHIP: 52S
 SHEET 2 DATE: 08/30/16 RANGE: 42E

REV. DATE	DESCRIPTION



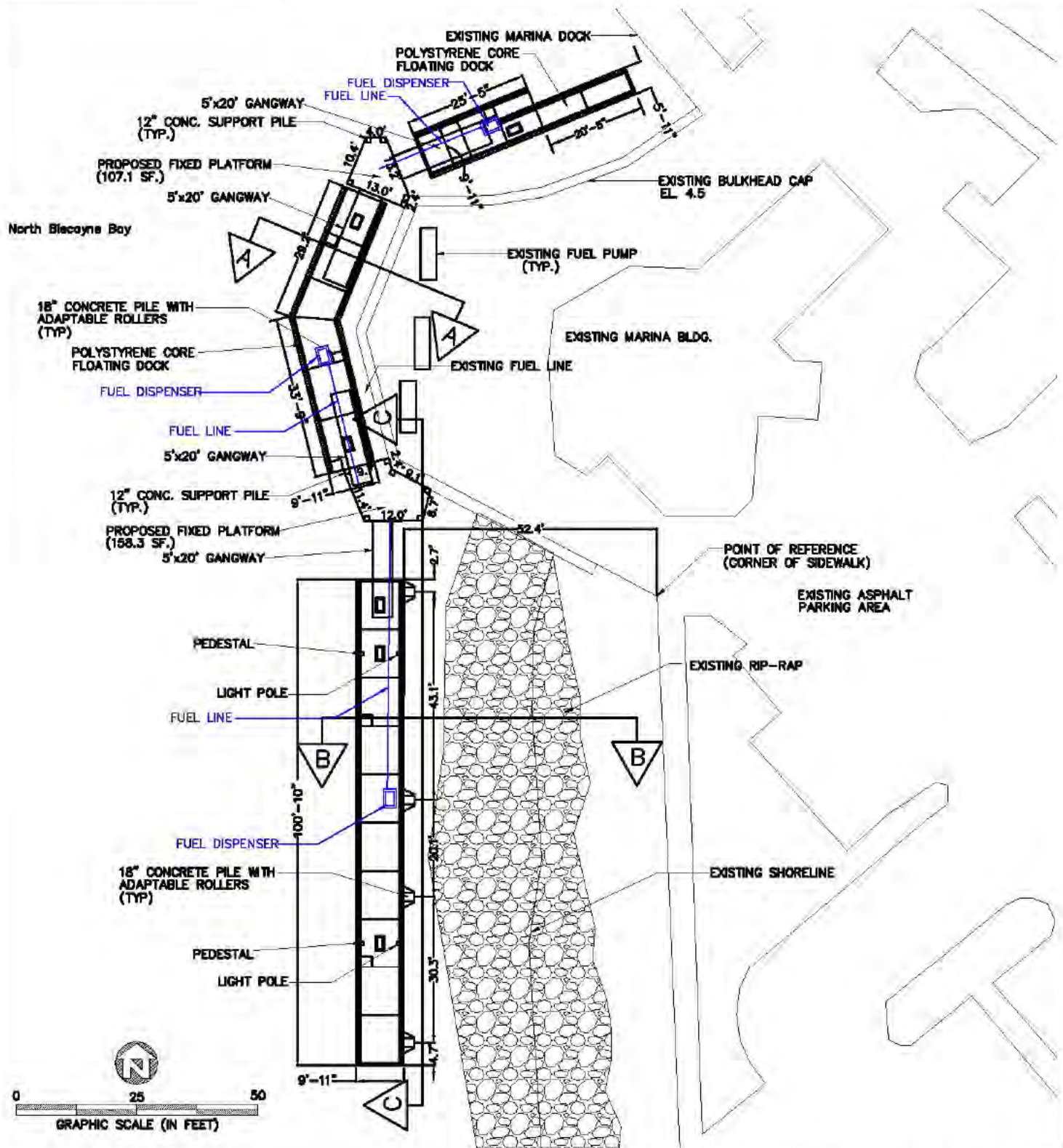
PURPOSE: **EXISTING CONDITION**
 DATUM: NGVD
 JOB #: 2010-03

EAS ENGINEERING, INC.
 55 ALMERIA AVENUE CORAL GABLES 33134 (305)445-5553

COUNTY OF MIAMI-DADE STATE OF FLORIDA
 APPLICATION BY:
MIAMI-DADE PARK AND RECREATION DEPT.
 HAULOVER MARINA
 13700 COLLINS AVENUE
 SHEET 3 DATE: 08/30/16

SECTION: 23
 TOWNSHIP: 52S
 RANGE: 42E

REV. DATE	DESCRIPTION
12/01/16	PLATFORM DIMENSIONS
12/13/16	ADDED FUEL PUMP
02/06/17	ADDED FUEL LINES



PURPOSE: **SITE PLAN**
 DATUM: N/A
 JOB #: 2010-03

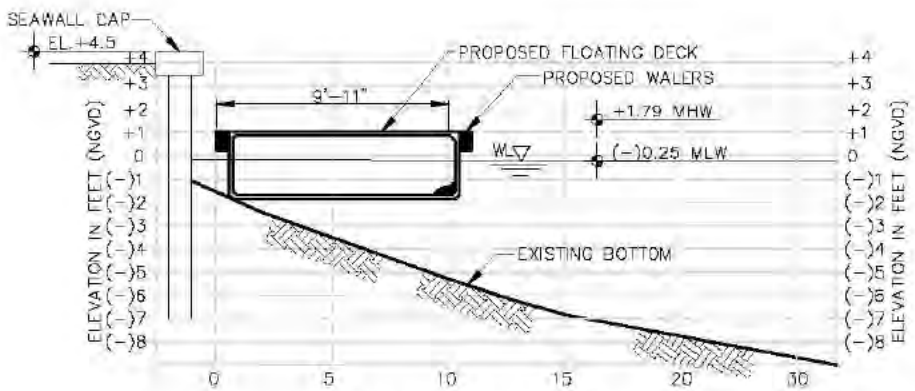
EAS ENGINEERING, INC.

65 ALMERIA AVENUE CORAL GABLES 33134 (305)445-6668

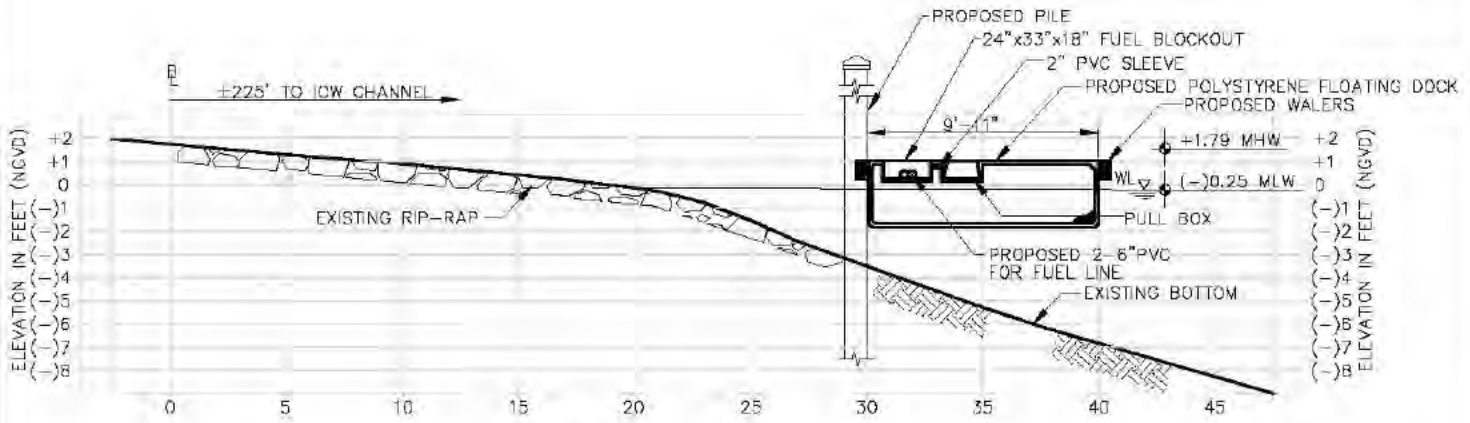
COUNTY OF MIAMI-DADE STATE OF FLORIDA
 APPLICATION BY:
MIAMI-DADE PARK AND RECREATION DEPT.
 HAULOVER MARINA
 13700 COLLINS AVENUE
 SHEET 4 DATE: 08-29-16

SECTION: 23
 TOWNSHIP: 52S
 RANGE: 42E

REV. DATE	DESCRIPTION
02/06/17	FUEL LINE ADDED



SECTION A-A

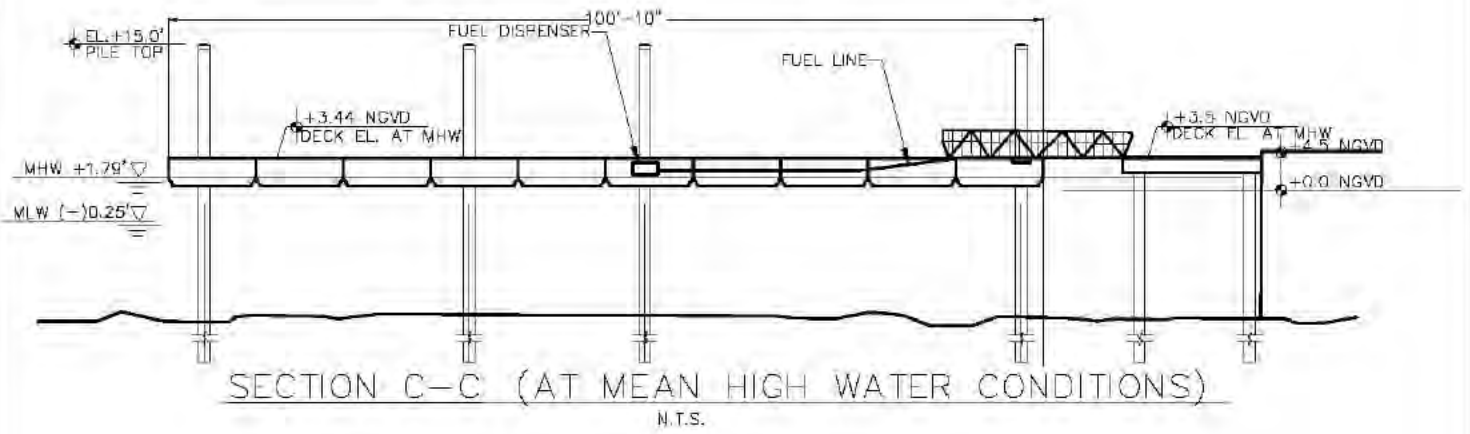
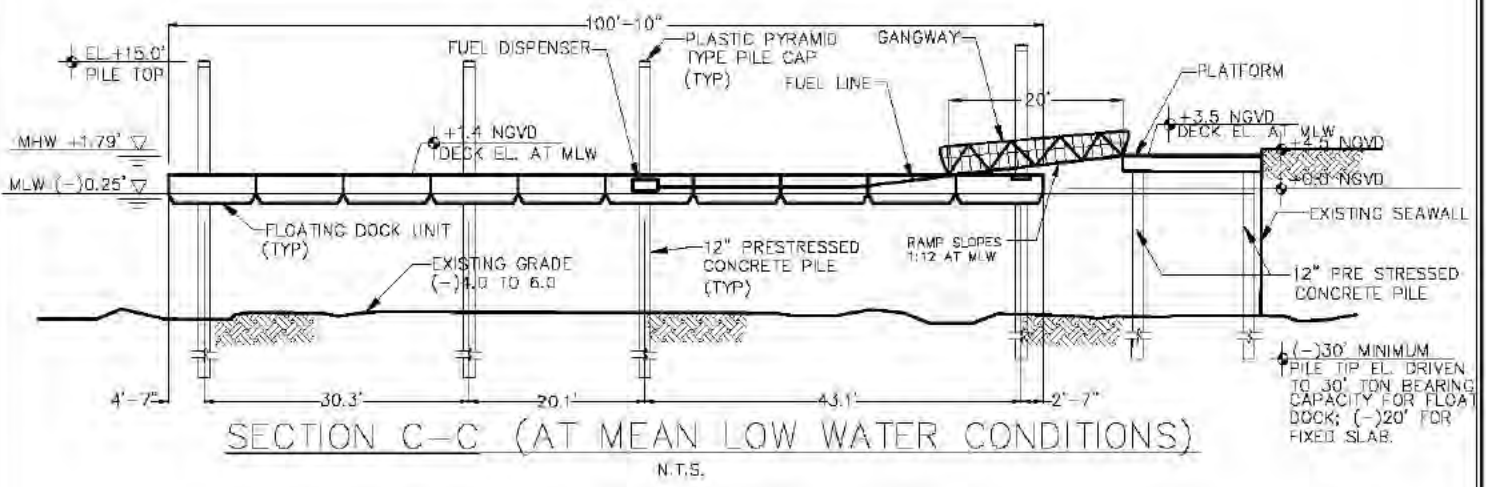


SECTION B-B

PURPOSE: **SECTION A-A AND B-B**
 DATUM: NGVD
 JOB #: 2010-03
EAS ENGINEERING, INC.
 56 ALMERIA AVENUE CORAL GABLES 33134 (305)445-5553

COUNTY OF MIAMI-DADE STATE OF FLORIDA
 APPLICATION BY:
MIAMI-DADE PARK AND RECREATION DEPT.
 HAULOVER MARINA SECTION: 23
 13700 COLLINS AVENUE TOWNSHIP: 52S
 SHEET 5 DATE 08/30/16 RANGE: 42E

REV. DATE	DESCRIPTION
12/01/16	GEN. REVISION
02/06/17	FUEL LINE ADDED



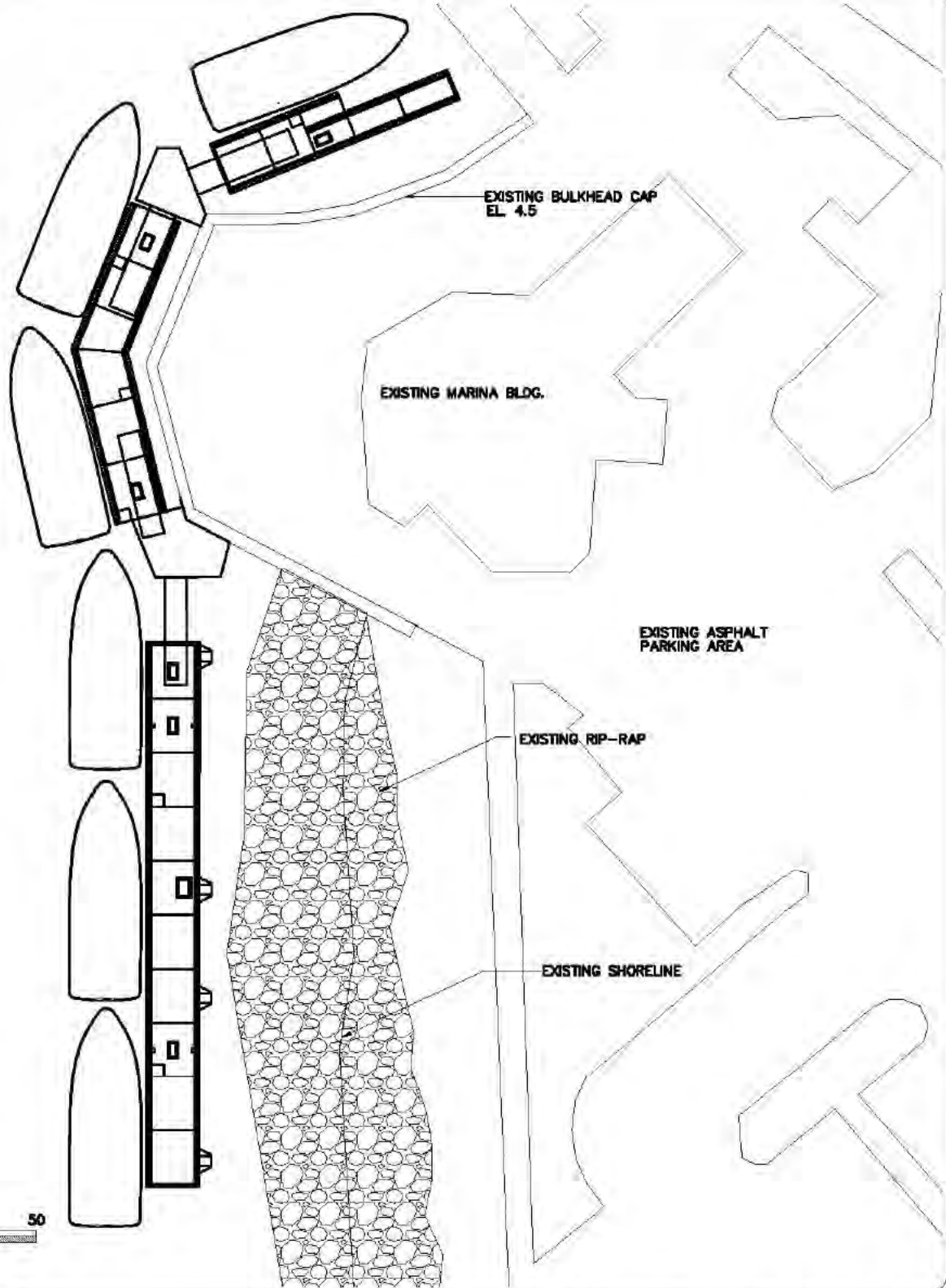
PURPOSE: **SECTION C-C**
 DATUM: NGVD
 JOB #: 2010-03
EAS ENGINEERING, INC.
 55 ALMERIA AVENUE CORAL GABLES 33134 (305)445-5553

COUNTY OF MIAMI-DADE STATE OF FLORIDA
 APPLICATION BY:
MIAMI-DADE PARK AND RECREATION DEPT.
 HAULOVER MARINA
 13700 COLLINS AVENUE
 SHEET 6 DATE 08/30/16

SECTION: 23
 TOWNSHIP: 52S
 RANGE: 42E

REV. DATE	DESCRIPTION
12/01/16	PLATFORM DIMENSIONS

North Biscayne Bay



PURPOSE: **SLIP LAYOUT**
 DATUM: N/A
 JOB #: 2010-03

EAS ENGINEERING, INC.

65 ALMERIA AVENUE CORAL GABLES 33134 (305)445-6668

COUNTY OF MIAMI-DADE STATE OF FLORIDA
 APPLICATION BY:
MIAMI-DADE PARK AND RECREATION DEPT.
 HAULOVER MARINA
 13700 COLLINS AVENUE
 SHEET 7 DATE: 12-13-16

SECTION: 23
 TOWNSHIP: 52S
 RANGE: 42E